

Professional desktop thermal printers

TD Series datasheet

brother.co.uk/labelling/td-labeller



TD-2 Range

in detail

TD-2020

TD-2120N

TD-2130N

2 Inch

Printing

Print technology	Direct thermal	
Print speed	MAX 6 ips (152.4 mm/sec) (*Under Brother standard environment) (Battery option: Max 3 ips (76.2mm/sec))	
Resolution	203dpi	300dpi
Max. print width	56mm (2.205 inch)	
Max. print length	1,000 mm (9.37 inch)	
Min. print length	6mm (0.24 inch)	
Media sensor type	Gap (transmissive), Bar (reflective)	
Media sensor location	Reflective (adjustable), Gap (fixed)	
Tear off release mode	Standard: Continuous, Tear off Optional: Not supported	Standard: Continuous, tear off Optional: Peeled

Media

Media types	Receipt (Non-coated & Coated)	
Media thickness	0.058mm - 0.279mm (0.0023 inch to 0.011 inch)	
Media width	19mm - 63mm (0.75 inch to 2.48 inch)	
Media length	12.7 mm - 1,000 mm (0.5 inch to 39.37 inch)	
Diameter (max)	127mm (5 inch)	
Core Diameter (max)	25.4mm (1 inch)	

Connectivity

USB		●	●
Serial	Yes RS232C * Original serial cable (option required)		
Wired LAN	Not supported	10/100BASE-TX	
USB host port	Not supported	Supported only PA-WI-001 (optional) or barcode readers	
Bluetooth (option)		●	●
Bluetooth profile	—	SPP (Serial Port Profile) / BIP (Basic Imaging Profile) / OPP (Object Push Profile) supported	
Wireless LAN (option)	—	IEEE802.11b/g/n (Infrastructure Mode) IEEE802.11b (Adhoc mode)	
Wireless LAN security	—	Open System (None/WEP) <Personal mode> Open System (None/WEP) Public Key Authentication (WEP) WPA-PSK/WPA2-PSK (TKIP/AES) <Enterprise mode> LEAP (CKIP) EAP-FAST (TKIP/AES) PEAP (TKIP/AES) EAP-TTLS (TKIP/AES) EAP-TLS (TKIP/AES)	

General

Control panel		3 button 2 LED	
Touch panel keyboard display with real time clock (option)		●	●
Tear bar	●	●	●
Peeler	—	Optional	
Battery (option)		●	●
Battery charging time	—	180 min. (23°C New battery)	
Battery yield	—	57mm x 200m (1 roll : 5 inch OD roll) * Connected by USB with new battery with full charging. Printed by Brother special data (9% coverage 57mm x 127mm) at 23 degree Celsius (*Under Brother standard environment)	
Adapter		AC adapter (100 - 240 V 50/60Hz)	

TD-2020

TD-2120N

TD-2130N

2 Inch

Memory

RAM	32MB
Flash	16MB

Environmental

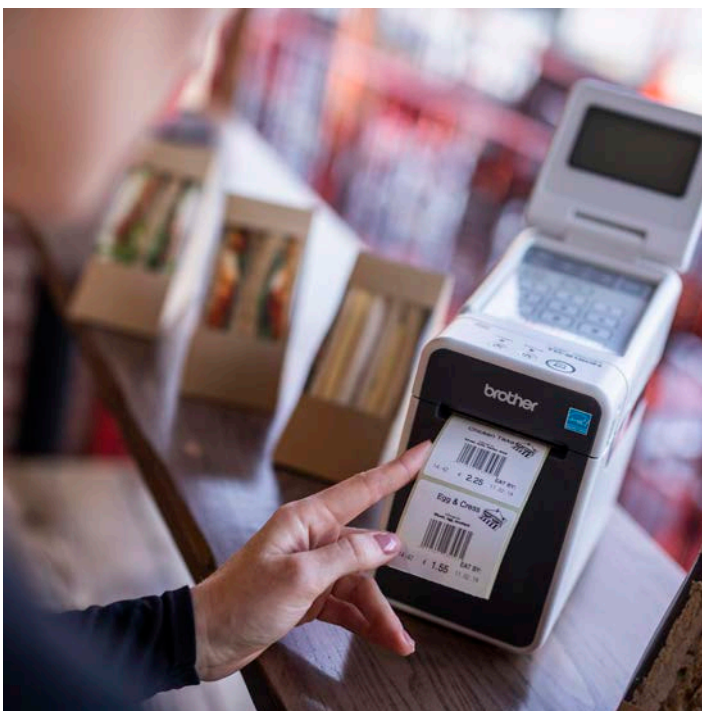
Operating temperature	Operate: 5°C to 40°C	Operate: 5°C to 40°C Charge: 5°C to 40°C
Operating humidity	20 to 80% (No condensation, Maximum wet bulb temperature: 27°C)	
Storage temperature	-20°C to 60°C	
Storage humidity	20 to 80% (No condensation, Maximum wet bulb temperature: 45°C)	

Weights & Dimensions

Dimensions (mm)	110mm (w) x 172 mm (h) x 215mm (d)	
Weights	Printer: 1.32kg 2.91 pound	Printer: 1.34kg 2.96 pound. Printer with battery: 1.88kg 4.15 pound

Included Items

Supplied in box	Printer	
	AC power cord & AC adaptor	
	CD (Printer Driver, P-touch Editor 5.0, P-touch Transfer Manager 2.1, P-touch Update Software, Printer Setting tool, User's Guide, Software User's Guide)	CD (Printer Driver, P-touch Editor 5.0, P-touch Transfer Manager 2.1, P-touch Update Software, BRAdmin Light, Printer Setting tool, User's Guide, Software User's Guide, Network User's Guide)
	USB Cable (mini-USB)	
	Quick Reference Guide. Product Safety Guide (including warranty card)	



TD-4 Range in detail

TD-4410D

TD-4420DN

TD-4520DN

TD-4550DNWB

TD-4420TN

TD-4520TN

TD-4650TNWB

TD-4750TNWB

TD-4650TNWB

TD-4750TNWB

4 Inch

Printing

Print technology	Direct thermal				Thermal Transfer/Direct Thermal											
	203mm/sec		152mm/sec		152mm/sec		127mm/sec		203.2mm/sec		152.4mm/sec		203.2mm/sec		152.4mm/sec	
Print speed	203mm/sec		152mm/sec		152mm/sec		127mm/sec		203.2mm/sec		152.4mm/sec		203.2mm/sec		152.4mm/sec	
Resolution	203dpi		300dpi		203dpi		300dpi		203dpi		300dpi		203dpi		300dpi	
Max. print width	104.1mm		108.4mm		108mm		105.7mm		108mm		105.7mm		108mm		105.7mm	
Min. print length	Continuous: 6.4mm, Peeler: 12.7mm, Cutter: 20mm, Tear: 27mm				Peeler: 25.4mm, Cutter: 25.4mm Tear: 50mm				Continuous: 5mm Tear mode: Media width less than 2 inch: 25.4 mm Media width greater than 2 inch: 50 mm Peeler mode: 25.4mm Cutter mode: 25.4mm							
Max. print length	3000mm				25,400mm		11,430mm		25,400mm		11,430mm		25,400mm		11,430mm	
Media sensor type					Gap (Transmissive), Bar (Reflective)											
Media sensor location					Gap (Fixed), Reflective (Adjustable)											
Tear off release mode	Standard: Continuous, Tear off Optional: Peeler, Cutter								Standard: Continuous, tear off Optional: Peeler, Cutter				Standard: Continuous, tear off Optional: Peeler, Cutter*			

Media

Media types	Wristbands, Continuous, Die cut, Fan fold, Perforated, Tag				Media type Continuous, black mark, label with gap, notch media, punched hole media				Media type Continuous, black mark, label with gap, notch media, punched hole media, Gen2 RFID tag			
Media thickness	0.058mm - 0.279mm (0.002 inch to 0.011 inch)				0.06 - 0.19 mm (0.002 inch to 0.007 inch)							
Media width	19mm - 118.11 mm (0.75 inch to 4.65 inch)				20 - 112mm (0.79 inch to 4.41 inch)							
Media length	6.4mm - 3,000 mm (0.25 inch to 118.11 inch)				5mm - Max. print length (0.20 inch to Max inch)							
Diameter (max)					127mm (5 inch)							
Core Diameter (min)	12.7mm (0.5 inch)				25.4mm & 38.1mm (1.0 inch & 1.5 inch)				25.4mm & 38.1mm			

Ribbon

Types	Wax, Wax/Resin, Resin			
Wound type	Outside wound			
Ribbon width	40 - 110 mm (1.57 inch to 4.33 inch)			
Suggested paper core width	0.5 inch paper core: fixed width 110mm, width 2 notches in each side 1 inch paper core: fixed width 110mm with 2 notches in each side 1 inch paper core: paper core width is the same as ribbon width and use with ribbon spindles			
Inner paper core & ribbon length	0.5 inch paper core: Max. OD 40mm, 110m length 1 inch paper core: Max. OD 67mm, 300m length			

Connectivity

USB	USB version 2.0 (full speed) Type B				USB Version 2.0 (High Speed)			
USB host capability	●				● ● ● ●			
Serial	Serial RS232C (DB9 male)				Serial RS232C (DB9 female)			
Wired LAN					10/100BASE-TX			
USB host port	●				● ● ● ●			
Bluetooth	—				Version 4.2			
Bluetooth profile	—				SPP, OPP, HCRP Bluetooth Classic, GATT (Bluetooth Low Energy)			
Wireless LAN	—				802.11a/b/g/n			
Wireless LAN security	—				See model TD-4650TNWB specifications and also includes Wireless direct mode WPA2-PSK (AES)			
MFI support	●							
AirPrint	●							
Wired LAN	● ● ● ●				● ● ● ●			

* Not suitable for RFID tags

TD-4410D
TD-4420DN
TD-4520DN
TD-4550DNWB
TD-4420TN
TD-4520TN
TD-4650TNWB
TD-4750TNWB
TD-4650TNWBR
TD-4750TNWBR

4 Inch

General

Control panel	3 button 3 LED	7 button 3 LED	1 button 1 LED with 3 colours	1 LED with 3 colors, 6 buttons for Navigation, MENU and FEED/PAUSE/SELECT
LCD type	—	Mono	—	Colour

Power

Adapter	AC adapter (100 - 240V 50/60Hz)	AC adapter Input: AC 100-240V, 2.0A, 50-60Hz Output: DC24V, 2.5A, 60W, LPS	AC adapter Input: AC 100-240V, 2.0A, 50-60Hz Output: DC 24V, 3.75A, 90W CEC6 compliance
---------	---------------------------------	---	--

Software

Operating system support	Windows 7/8/8.1/10 Linux	Windows 7/8/8.1/10 Windows Server 2008/2008R2/2012/2012R2/2016 Linux	Windows 7, 8, 8.1, 10 Windows Server 2008, 2008 R2, 2012, 2012 R2, 2016, 2019 Linux Mac OS v10.6-10.15
--------------------------	-----------------------------	--	---

Supported printer commands	P-touch Template, ESC/P	P-touch Template, ESC/P, Raster, ZPL II emulation, CPCL emulation	FBPL-EZD (EPL2, ZPL2, DPL) emulation
----------------------------	-------------------------	---	--------------------------------------

Barcode symbologies	Linear: CODE 39, ITF(-2/5), EAN-8(JAN8), EAN-13(JAN13), UPC-A, UPC-E, CODABAR (NW-7), CODE 128, GS1-128 (UCC/EAN 128), GS1 Databar (Standard (Omnidirectional)/ Truncated/Stacked/Stacked Omnidirectional/ Limited/Expanded), CODE93, POSTNET, UPC/EAN EXTENSION, MSI, Intelligent Mail Barcode 2-dimensional: QR Code (model 1, model 2, micro QR), Maxicode, PDF417 (Standard, Truncate, MicroPDF417) Data Matrix (ECC200 Square, ECC200 Rectangular) Aztec	Linear: Code128UCC, Code128 subsets A, B, C, EAN128, Interleaved 2 of 5, Interleaved 2 of 5 with check digit, Code39, Code39 with check digit, Code93, EAN13, EAN8, UPCA, UPCE, EAN and UPC 2 (5) digits add-on, Codabar, Postnet, MSI, MSI with check digit, PLESSEY, China post, ITF14, Code11, TELEPEN, TELEPENN, PLANET, Code49, Deutsche Post Identcode, Deutsche Post Leitcode, LOGMARS 2-dimensional: GS1 DataBar, GS1 DataMatrix, Maxicode, AZTEC, PDF417, QR Code, Micro PDF 417
---------------------	---	--

Internal fonts	ESC/P> Bitmap font: LetterGothicBold (16,24,32,48dot), Helsinki (16,24,32,48dot), Brussels (24,32,48dot), Brougham (24,32,48dot), San Diego (24,32,48dot), Gothic (16,24,32dot) Outline font: LetterGothicRegular, Helsinki, Brussels, Gothic (1 - 400dots) <P-touch Template> Outline font: LetterGothicRegular, Helsinki, Brussels, Gothic (1 - 400dots) Downloadable font support* via Font Manager software	8 alpha-numeric bitmap fonts for FBPL Monotype Image® true type font engine with one CG Triumvirate Bold Condensed scalable font
----------------	--	--

Memory

RAM	256MB	64MB	128MB
Flash	64MB	128MB	128MB

Environmental

Operating temperature		Operate: 5°C to 40°C
Operating humidity	20 - 85% (No condensation, Max wet bulb temperature: 27°C)	25 - 85% non-condensing
Storage temperature	-20°C to 60°C	-40°C to 60°C
Storage humidity		10 - 90% (No condensation)

Weights & Dimensions

Dimensions (mm)	180(w) x 155(d) x 224(h)	204(w) x 178(d) x 280(h)	219(w) x 284(d) x 191(h)
Weights	2.08kg	2.5kg	3.0kg

Included Items

Supplied in box	AC adaptor & cord, USB cable, documentations	AC adaptor & cord, USB cable, documentations. Pair of 1" Ribbon spindles for 300M ribbon 1" ribbon paper core	Printer AC code & AC adaptor A pair of 1" Ribbon spindles for 300M ribbon 1" ribbon paper core USB Cable (1.5m) Quick Start Guide Product Safety Guide (including warranty card)
-----------------	--	---	--

TD-2 Accessories and consumable supplies

Brother has designed and engineered a wide range of accessories to help customise the solution to meet your specific labelling requirements. Brother accessories help users equip their device to cope with the specific requirements of use.

Power and additional options

PA-WI-001

Wi-Fi WLAN Interface

TD-2120N
TD-2130N



PA-BI-001

Bluetooth Interface

TD-2120N
TD-2130N



PA-SCA-001

Serial Adapter

TD-2020
TD-2120N
TD-2130N



PA-TDU-001

Touch Panel Display

TD-2120N
TD-2130N



PA-BB-001

Battery Charging Unit*

TD-2120N
TD-2130N



* Requires PA-BT-4000LI

PA-BT-4000LI

Li-ion rechargeable Battery*

TD-2120N
TD-2130N



* Requires PA-BB-001

PA-LP-001

Label Peeler

TD-2120N
TD-2130N



Consumables

RD-S05E1

Die Cut Labels Roll

Label size:
51mm x 26mm
Quantity:
1552 per roll
Colour: white
TD-2020
TD-2120N
TD-2130N



RD-S07E5

Continuous Receipt Roll

Size:
58mm x 86m
Colour: white
TD-2020
TD-2120N
TD-2130N



Wristband options for TD-2130N only

Wristband Product code	Description	Size	Quantity
8100-11-PDK	CompuBand® adult wristband direct thermal, clasp closure, white.	29.2 x 2.9	150
8101-11-PDK	CompuBand® adult/paediatric wristband direct thermal, clasp closure, white.	29.2 x 1.9	150
8102-11-PDK	Conf-Ident® paediatric wristband, direct thermal, clasp closure, white	26.6 x 2.5	150
8150-11-PDL	ScanBand® adult wristband direct thermal, adhesive closure, white.	29.2 x 2.5	200
8151-11-PDL	ScanBand® adult/paediatric wristband adhesive closure, white.	29.2 x 1.9	200
8185-11-PDL	Precision® infant wristband adhesive closure, white.	20.3 x 2.9	200
8195-11-PDO	TenderCare® Mother-infant wristband set, adhesive closure, white.	20.3 x 2.9	120

Label Product code	Description	Size	Quantity
8100-11-PDK	CompuBand® adult wristband direct thermal, clasp closure, white.	29.2 x 2.9	150
8101-11-PDK	CompuBand® adult/paediatric wristband direct thermal, clasp closure, white.	29.2 x 1.9	150
8102-11-PDK	Conf-Ident® paediatric wristband, direct thermal, clasp closure, white	26.6 x 2.5	150
8150-11-PDL	ScanBand® adult wristband direct thermal, adhesive closure, white.	29.2 x 2.5	200
8151-11-PDL	ScanBand® adult/paediatric wristband adhesive closure, white.	29.2 x 1.9	200
8185-11-PDL	Precision® infant wristband adhesive closure, white.	20.3 x 2.9	200

TD-4D Accessories and consumable supplies

Brother has designed and engineered a wide range of accessories to help customise your labelling solution. Brother accessories help users equip their device to cope with the specific requirements of use.

TD-4D Additional options

PA-LP-002 Label peeler

TD-4410D
TD-4420DN
TD-4520DN
TD-4550DNWB



PA-CU-001 Cutter

TD-4410D
TD-4420DN
TD-4520DN
TD-4550DNWB



PA-HU2-001 Thermal print head (203dpi)

TD-4410D
TD-4420DN



PA-HU3-001 Thermal print head (300dpi)

TD-4520DN
TD-4550DNWB



PA-PR2-001 Platen roller (203dpi)

TD-4410D
TD-4420DN



PA-PR3-001 Platen roller (300dpi)

TD-4520DN
TD-4550DNWB



TD-4D Consumables

RD rolls	Size	Label quantity	Colour	Item no
Continuous receipt roll	102mm x 27.7m	n/a	White	RD-M01E5
Continuous receipt roll	76mm x 35.3m	n/a	White	RD-P08E5
Continuous receipt roll	58mm x 86m	n/a	White	RD-S07E5
Continuous receipt roll	58mm x 12m	n/a	White	RD-R03E5
Continuous label roll	102mm x 44.7m	n/a	White	RD-S01E2
Die-cut labels roll	102mm x 50mm	843	White	RD-S03E1
Die-cut labels roll	102mm x 152mm	72	White	RD-M03E1
Die-cut labels roll	102mm x 152mm	281	White	RD-S02E1
Die-cut labels roll	76mm x 26mm	1564	White	RD-S04E1
Die-cut labels roll	76mm x 44mm	335	White	RD-P09E1
Die-cut labels roll	51mm x 26mm	1564	White	RD-S05E1
Die-cut labels roll	51mm x 26mm	450	White	RD-Q04E1



TD-4T Accessories and consumable supplies

TD-4T Additional options

PA-LP-004 Label peeler*

TD-4420TN
TD-4520TN



PA-CU-003 Full and partial cutter*

TD-4420TN
TD-4520TN
TD-4650TNWB
TD-4750TNWB
TD-4650TNWBR*
TD-4750TNWBR*



PA-RH-001 External roll holder

TD-4420TN
TD-4520TN
TD-4650TNWB
TD-4750TNWB
TD-4650TNWBR
TD-4750TNWBR



* Not recommended for use with RFID tags

TD-4T Consumables

Rolls	Size	Quantity	Colour	Item No
Uncoated thermal transfer die cut labels	102mm x 74mm	1,100	White	BUS-1J074102-121
Uncoated thermal transfer die cut labels	102mm x 150mm	550	White	BUS-1J150102-121
Coated thermal transfer die cut labels	102mm x 74mm	1,100	White	BCS-1J074102-121
Coated thermal transfer die cut labels	102mm x 150mm	550	White	BCS-1J150102-121

Ribbons	Width	Length	Substrate compatibilities	Item No
Standard wax	110mm / 4.33 inch	300m	Coated/uncoated paper and tags, high gloss paper	BWS-1D300-110
Premium wax	110mm / 4.33 inch	300m	Coated/uncoated paper and tags, high gloss paper, economy synthetics	BWP-1D300-110
Standard wax/resin	110mm / 4.33 inch	300m	Coated/uncoated paper and tags, high gloss paper, economy synthetics	BSS-1D300-110
Premium wax/resin	110mm / 4.33 inch	300m	Coated/uncoated paper and tags, high gloss paper, synthetics	BSP-1D300-110
Standard resin	110mm / 4.33 inch	300m	Coated papers and tags, synthetics, textures	BRS-1D300-110
Premium resin	110mm / 4.33 inch	300m	Economy and speciality synthetics	BRP-1D300-110

For additional consumable options please contact your Brother account manager.



brother
at your side

Contact:

www.brother.co.uk

enquiries@brother-uk.com

Brother UK Ltd.

Shepley Street, Audenshaw

Manchester, M34 5JD

Tel: +44 (0) 333 777 4444

All specifications correct at the time of printing (February 2020) and are subject to change. Brother is a registered trademark of Brother Industries Ltd. Brand product names are registered trademarks or trademarks of their respective companies.